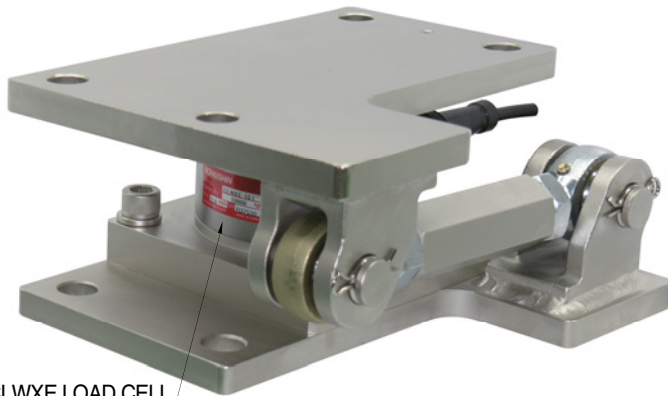
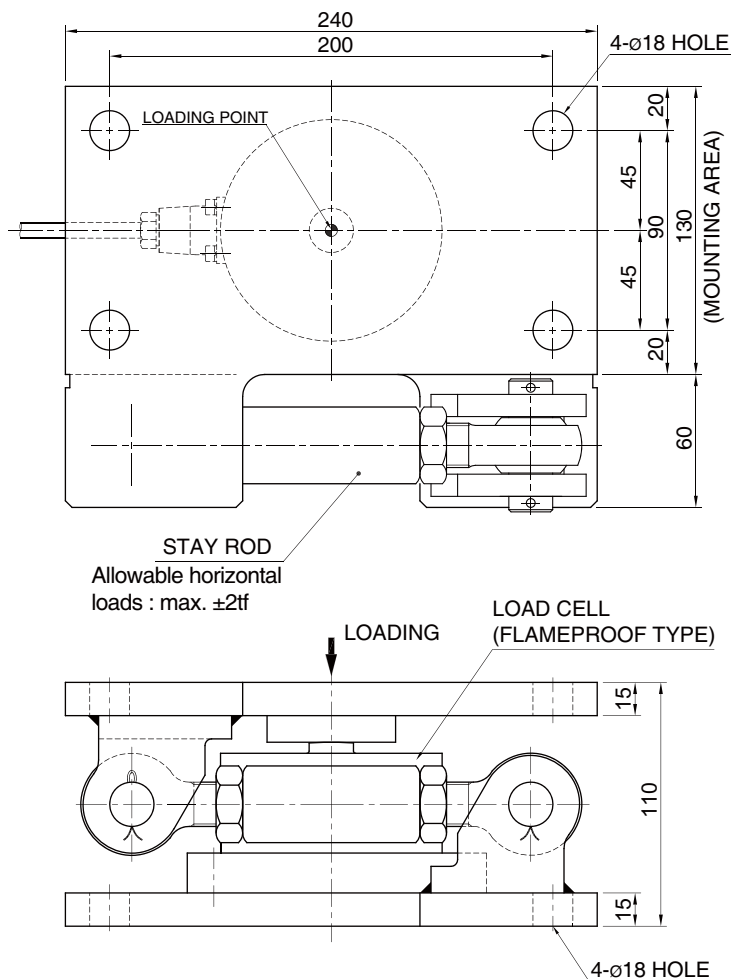


## Weigh Module Model BMLX Series

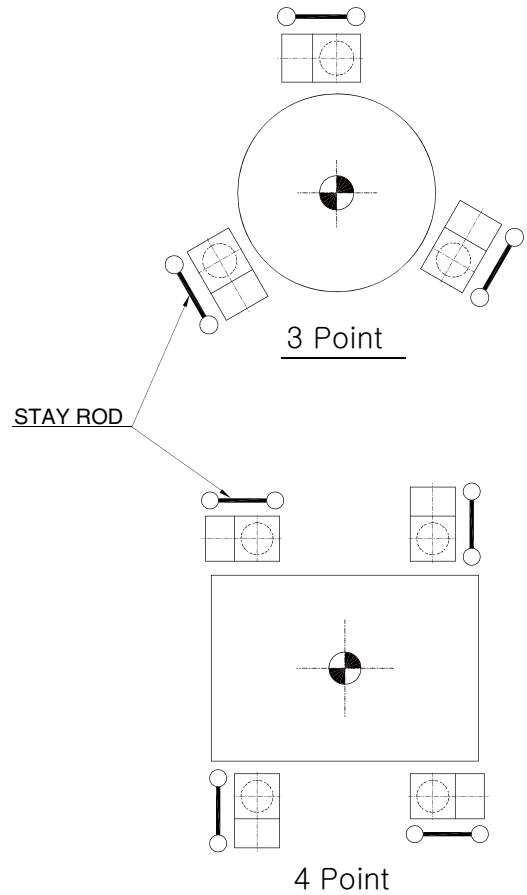
Model	BMLX - 1
Material	Zinc plated steel
Load cell	CLWXE - 2t ~ 15t Flameproof type(Ex d IIB T4 / KOSHA)



CLWXE LOAD CELL  
(Sold separately)



### STAY ROD INSTALLATION DIRECTION



### ORDERING INFORMATION

#### 1. Mounting kit : BMLX - 1

Zinc Plated Steel Mounting Kit  
 Load cell exclude(Sold separately)

#### 2. LOAD CELL : CLWXE - 2T

(Flameproof type) MODEL CAPACITY  
 CLWXE 2, 3, 5, 10, 15 ton

\* Flameproof type  
 summing box



\* Specifications are subject to change without notice

APR, 2018