

## Model CBFS Series

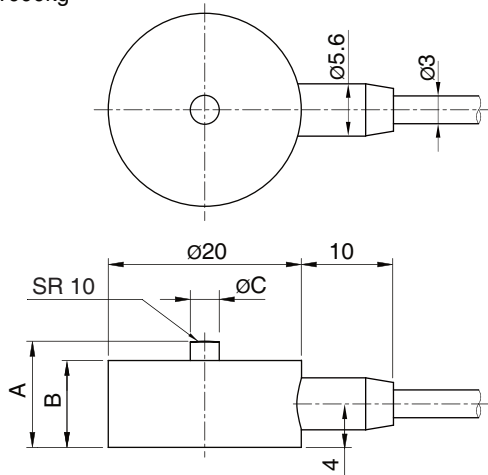
Compression

Miniature Load Cell(3kg ~ 1000kg)



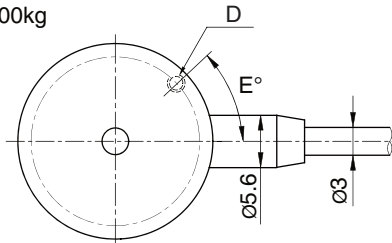
### TYPE - A

3~1000kg



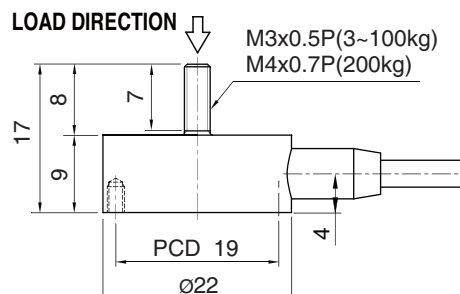
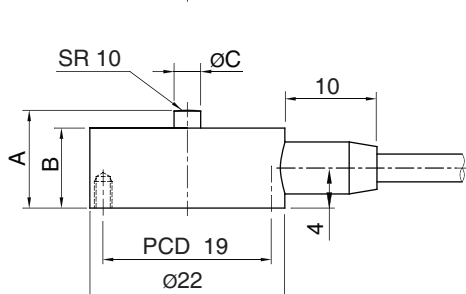
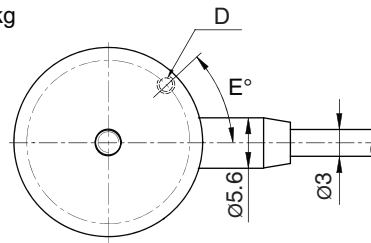
### TYPE - B

3~1000kg



### TYPE - C

3~200kg



The model CBFS miniature type is designed for low profile compression service.

Its capacities range from 3kg to 1000kg and it comes complete with 1.5m of load cell cable.

- low profile
- Rated output (1mV/V)
- Protection class IP65

## SPECIFICATIONS

MODEL	CBFS			
Rated capacity (R.C.)	3, 5, 10kg	20, 30, 50kg	100, 200, 300, 500, 1000kg	
Rated output(R.O.)	mV/V	1.0 ± 0.4	1.0 ± 0.2	1.0 ± 0.01
Material	Stainless steel			
Non-linearity	≤0.5% R.O.			
Hysteresis	≤0.5% R.O.			
Non-repeatability	≤0.5% R.O.			
Creep error	≤0.5% in 20min.			
Zero balance	≤1% R.O.			
Compensated temperature range	-10 ~ 70°C			
Operating temperature range	-20 ~ 80°C			
Temp. effect on rated output	≤0.4% LOAD/10°C			
Temp. effect on zero balance	≤0.2% R.O./10°C			
Terminal input resistance	400 Ohms ± 50 Ohms			
Terminal output resistance	350 Ohms ± 5 Ohms			
Insulation resistance (Min.)	2000 MOhms at 50V DC			
Excitation voltage	3~5V(Recommended), 10V(Max.)			
Electrical connection	3mmx1.5m(28AWG x 4C Shielded)			
Protection class	meets IP 65			
Safe overload	150% R.C			
Ultimate overload	300% R.C			

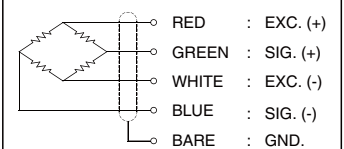
Capacity	A	B	C	D	E°
3~100 kg	11	9	3	3-M2.5x0.45P	60°
200~500 kg	11	10	4	4-M2.5x0.45P	45°
1000 kg	14	13	4	4-M2.5x0.45P	45°

## ORDERING INFORMATION

### CBFS - 10

MODEL	CAPACITY
CBFS A	3kg~1000kg
CBFS B	3kg~1000kg
CBFS C	3kg~200kg

## WIRING INFORMATION



\* Specifications are subject to change without notice

DEC, 2020