

## Model CDKM Series

Load Measuring Pin (5t ~ 60t)

The CDKM series pin type load cell is designed for use in harsh industrial environments with the strain gauge mounted inside the axial bore.

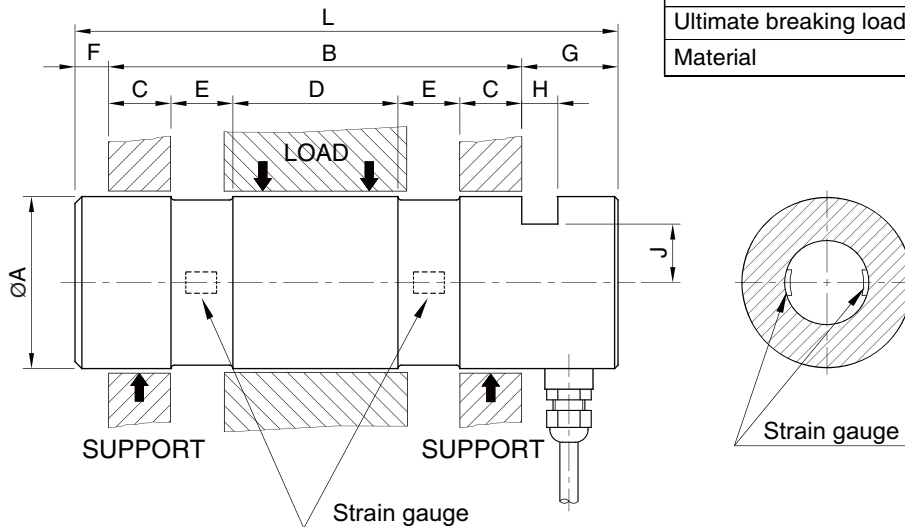
Custom designs are available in various range of capacity and dimension.

- Stainless steel (17-4PH) construction
- Fully welded protection (IP68)



### SPECIFICATIONS

Rated capacity (R.C.)	5t ~ 60t
Rated output (R.O.)	1.0mV/V (Nominal)
Non-linearity	≤0.5% ~ 2.0% R.O.
Non-repeatability	≤0.2% R.O.
Compensated temperature range	-10 ~ 70°C
Operating temperature range	-20 ~ 80°C
Excitation voltage	3~12V(Recommended), 15V(Max.)
Cable	∅5mm x 5m (4Core shielded)
Protection class	meets IP 68
Safe overload	150% R.C.
Ultimate breaking load	≥500% R.C.
Material	Stainless steel (17-4PH)



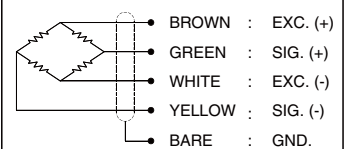
### ORDERING INFORMATION

**CDKM** - **10T**  
 MODEL CAPACITY  
**CDKM** 5, 10, 20, 40, 60t

### Customized model

**CDKM** [ ] - [ ]  
 Classification No. Capacity

### WIRING INFORMATION



### Dimension-mm

Rated Capacity	∅A	B	C	D	E	F	G	H	J	L	Weight (kg)
5t (49.04kN)	35 h6	83	12	35	12	8	24	6.3	12	115	0.9
10t (98.07kN)	50 h6	120	18	48	18	10	30	10.5	20	160	2.0
20t (196.1kN)	65 h6	155	20	65	25	10	30	10.5	22.5	195	5.5
40t (392.3kN)	85 h6	215	35	89	28	10	30	10.5	28	255	9.0
60t (588.4kN)	100 h6	300	55	120	35	12	30	10.5	36	342	17.7

\* Specifications are subject to change without notice

JAN, 2022