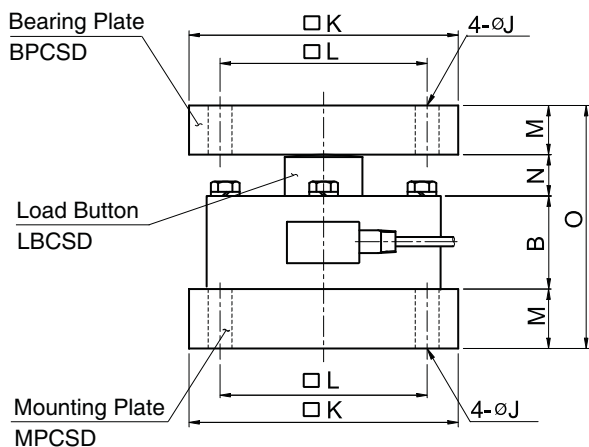
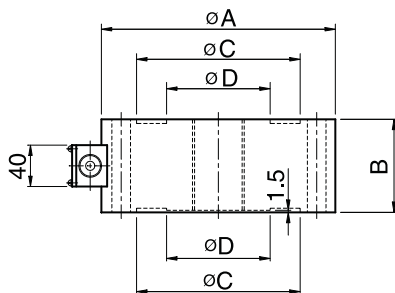
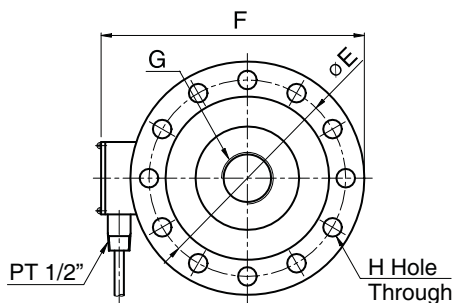


## Model CSDH Series

Compression

Low Profile Load Cell(30t ~ 100t)



The model CSDH is a low profile compression shear type load cell suited to precision applications where headroom and side loads are a problem. All units are machined from a solid billet of tool steel and sealed with welded diaphragms.

- Hermetically sealed
- High rated output(3mV/V)
- Low profile

### SPECIFICATIONS

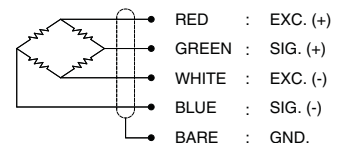
MODEL	CSDH
Rated capacity (R.C.)	30, 50, 100t
Rated output(R.O.)	3mV/V ± 0.3%
Non-linearity	≤ 0.1% R.O.
Hysteresis	≤ 0.1% R.O.
Non-repeatability	≤ 0.05% R.O.
Creep error	≤ 0.03% in 20min.
Zero balance	≤ 1% R.O.
Compensated temperature range	-10 ~ 70°C
Operating temperature range	-20 ~ 80°C
Temp. effect on rated output	≤ 0.03% LOAD/10°C
Temp. effect on zero balance	≤ 0.03% R.O./10°C
Terminal input resistance	350 Ohms ± 3.5 Ohms
Terminal output resistance	350 Ohms ± 5 Ohms
Insulation resistance (Min.)	2000 MOhms at 50V DC
Excitation voltage	3~12V(Recommended), 15V(Max.)
Electrical connection	ø7mmx6m(22AWG x 4Core Shielded)
Protection class	meets IP 67
Safe overload	150% R.C
Ultimate overload	300% R.C

### ORDERING INFORMATION

**CSDH - 30T**

MODEL: CSDH      CAPACITY: 30, 50, 100ton

### WIRING INFORMATION



Capacity	A	B	C	D	E	F	G	H	J	K	L	M	N	O	Load Button	Bearing Plate	Mounting Plate	Weight (kg)
30, 50t (294.2, 490.3kN)	226	90	158	100	190	268	M50x 2P	12-ø18	23	260	200	47.5	40	225	LBCSD1	BPCSD1	MPCSD1	23
100t (980.7kN)	306	110	212	138	260	350	M76x 3P	16-ø22	27	360	280	57.5	50	275	LBCSD2	BPCSD2	MPCSD2	48

\* Specifications are subject to change without notice

APR, 2020