

Model DBCR Series

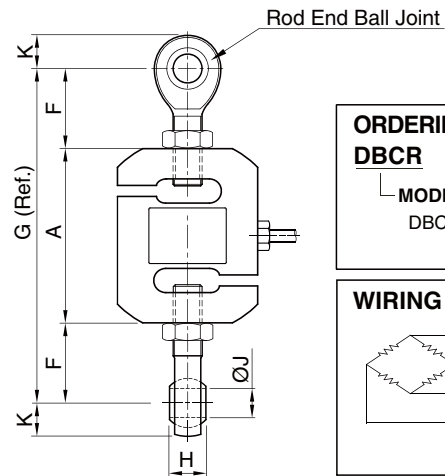
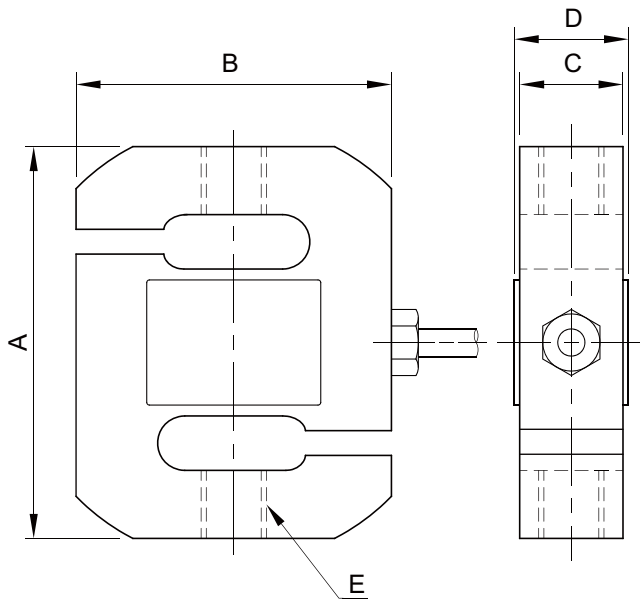
S- Beam Load Cell (100kg ~ 5t)

- High accuracy 0.03%
- Rated output 2mV/V
- Alloy tool steel construction
- Electroless nickel plated for corrosion resistance
- Fully sealed to IP67



SPECIFICATIONS

MODEL	DBCR	
Rated capacity (R.C.)	100, 200, 500kg, 1, 2, 3, 5t	
Rated output(R.O.)	2.0mV/V ± 0.5%	
Non-linearity	≤ 0.03% R.O.	
Hysteresis	≤ 0.03% R.O.	
Non-repeatability	≤ 0.015% R.O.	
Creep error	≤ 0.03% in 20min.	
Zero balance	≤ 1% R.O.	
Compensated temperature range	-10 ~ 70°C	
Operating temperature range	-20 ~ 80°C	
Temp. effect on rated output	≤ 0.03% LOAD/10°C	
Temp. effect on zero balance	≤ 0.03% R.O./10°C	
Terminal input resistance	410 Ohms ± 40 Ohms	
Terminal output resistance	350 Ohms ± 5 Ohms	
Insulation resistance (Min.)	2000 MΩ at 50V DC	
Excitation voltage	3~12V(Recommended), 15V(Max.)	
Electrical connection (22AWG x 4Core Shielded)	100kg~1t	∅5mmx3m (Standard), 6m (Option)
	2~5t	∅5mmx6m
Protection class	meets IP 67	
Safe overload	150% R.C	
Ultimate overload	300% R.C	



ORDERING INFORMATION	
DBCR - 200	
MODEL	CAPACITY
DBCR	100, 200, 500kg, 1, 2, 3, 5ton

WIRING INFORMATION	
	RED : EXC. (+)
	GREEN : SIG. (+)
	WHITE : EXC. (-)
	BLUE : SIG. (-)
	BARE : GND.

Dimension-mm

Rated Capacity	A	B	C	D	E	F	G	H	J	K	Rod End Ball Joints	Weight(kg)
100~500kg (980.7N~4.903kN)	72	54	19	25	M12x1.75P	42	156	16	12	16	SRDB 2	0.6
1t (9.807kN)	72	54	24	28	M12x1.75P	42	156	16	12	16	SRDB 2	0.7
2t (19.61kN)	90	74	28	32	M20x1.5P	55	200	25	20	26	SRDB 3	1.3
3t (29.42kN)	100	80	32	36	M24x2P	60	220	28	22	32	SRDB 4	1.7
5t (49.03kN)	108	86	34	38	M24x2P	58	224	28	22	32	SRDB 4	2.0

* Specifications are subject to change without notice

MAY, 2021

BONGSHIN LOADCELL CO., LTD.

55, Seobuk-ro, Gajang Ind.Complex, Osan-si, Korea / 18103
 TEL : 82-31-742-6661 www.bongshin.com
 FAX : 82-31-742-6664 E-mail : loadcell@bongshin.com