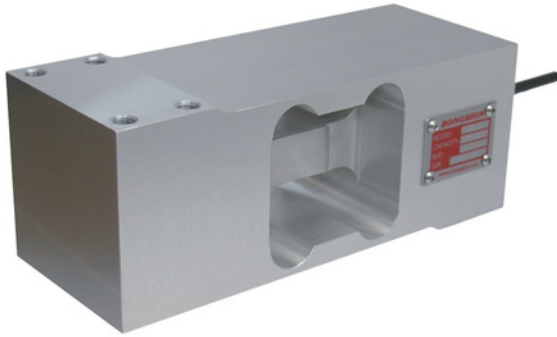


Model OBUX Series

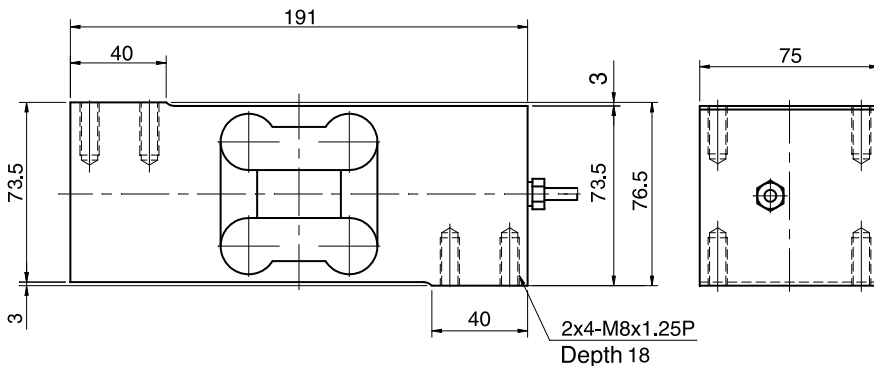
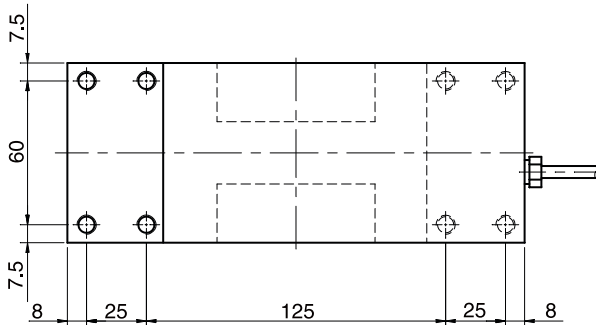
Single Point Load Cell (50~500kg)

The OBUX series single point load cell is designed for platform scale, hopper scale and automatic check weighing systems where great accuracy, reliability and fast measurement are required.



SPECIFICATIONS

MODEL	OBUX
Rated capacity (R.C.)	50, 100, 200, 300, 500kg
Rated output(R.O.)	2.0mV/V ± 10%
Non-linearity	≤0.02% R.O.
Hysteresis	≤0.02% R.O.
Non-repeatability	≤0.02% R.O.
Creep error	≤0.03% in 20min.
Zero balance	≤5% R.O.
Compensated temperature range	-10 ~ 70°C
Operating temperature range	-20 ~ 80°C
Temp. effect on rated output	≤0.012% LOAD/10°C
Temp. effect on zero balance	≤0.03% R.O./10°C
Terminal input resistance	420 Ohms ± 20 Ohms
Terminal output resistance	350 Ohms ± 5 Ohms
Insulation resistance (Min.)	2000 MOhms at 50V DC
Excitation voltage	3~12V(Recommended), 15V(Max.)
Electrical connection	∅5mmx3m(22AWG x 4Core Shielded)
Protection class	meets IP 65
Safe overload	150% R.C
Ultimate overload	300% R.C



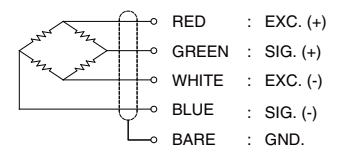
Capacity	Allowable Platform Size
50~500kg (0.981 ~ 4.903kN)	700 x 700mm

ORDERING INFORMATION

OBUX - 500

MODEL: OBUX CAPACITY: 50, 100, 200, 300, 500kg

WIRING INFORMATION



Weight : 2.4kg

* Specifications are subject to change without notice

APR, 2018

BONGSHIN LOADCELL CO., LTD.

55, Seobuk-ro, Gajang Ind. Complex, Osan-si, Korea / 18103
 TEL : 82-31-742-6661 www.bongshin.com
 FAX : 82-31-742-6664 E-mail : loadcell@bongshin.com