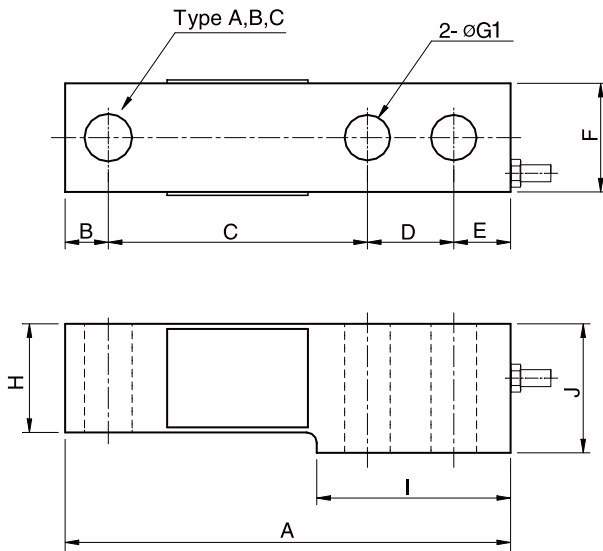


Model OSBK Series Shear Beam Load Cell (100kg ~ 10ton)



(500kg~2t)



The OSBK series single ended shear beam load cell is designed for high accuracy platform scales and a variety of process weighing applications.

- Alloy tool steel construction for high accuracy.
- Electroless nickel plated for corrosion resistance.
- Fully sealed to IP67.

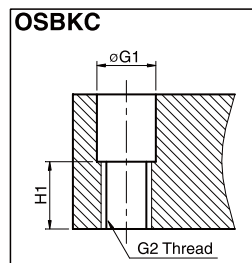
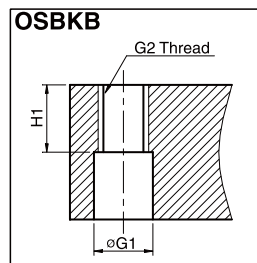
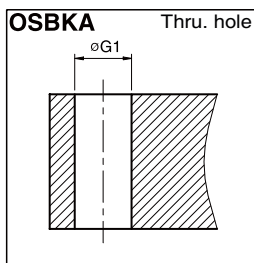
SPECIFICATIONS

MODEL	OSBKA, OSBKB, OSBKC	
Rated capacity (R.C.)	100, 200, 500kg, 1, 2, 3, 5, 10 ton	
Rated output(R.O.)	3.0mV/V ± 0.25%	
Non-linearity	≤0.03% R.O.	
Hysteresis	≤0.02% R.O.	
Non-repeatability	≤0.02% R.O.	
Creep error	≤0.03% in 20min.	
Zero balance	≤1% R.O.	
Compensated temperature range	-10 ~ 70°C	
Operating temperature range	-20 ~ 80°C	
Temp. effect on rated output	≤0.02% LOAD/10°C	
Temp. effect on zero balance	≤0.02% R.O./10°C	
Terminal input resistance	400 Ohms ± 20 Ohms	
Terminal output resistance	350 Ohms ± 5 Ohms	
Insulation resistance (Min.)	2000 MOhms at 50V DC	
Excitation voltage	3~12V(Recommended), 15V(Max.)	
Electrical connection (22AWG x 4Core Shielded)	200kg ~ 2t	Ø5mmx3m (Standard), 6m (Option)
	3, 5t	Ø5mmx6m
	10t	Ø7mmx6m
Protection class	meets IP 67	
Safe overload	150% R.C	
Ultimate overload	300% R.C	

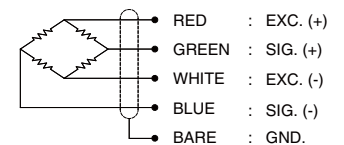
ORDERING INFORMATION

OSBKA - 5T

MODEL	CAPACITY
OSBKA	100, 200, 500kg
OSBKB	1, 2, 3, 5, 10ton
OSBKC	



WIRING INFORMATION



Dimension-mm

Capacity	A	B	C	D	E	F	G1	G2	H	H1	I	J	Weight(kg)
100kg ~ 2t (980.7N~19.61kN)	131	12.7	76.2	25.4	16.7	32	13.5	M12x1.75P	32	16	57	38	0.8
3, 5t (29.42, 49.03kN)	171.5	19	95.3	38.1	19.1	38.1	20.5	M20x2.5P	38	19	76.2	44.5	1.8
10t (98.07kN)	222.3	25.4	120.7	50.8	25.4	50.8	26.2	M24x2P	50.8	25	108	57.2	4.1

* Specifications are subject to change without notice

APR, 2018