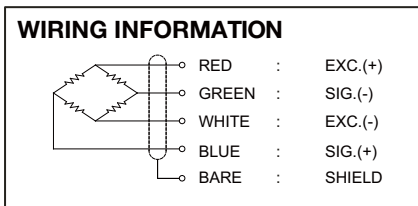
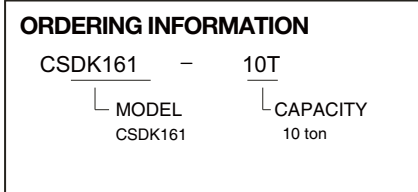


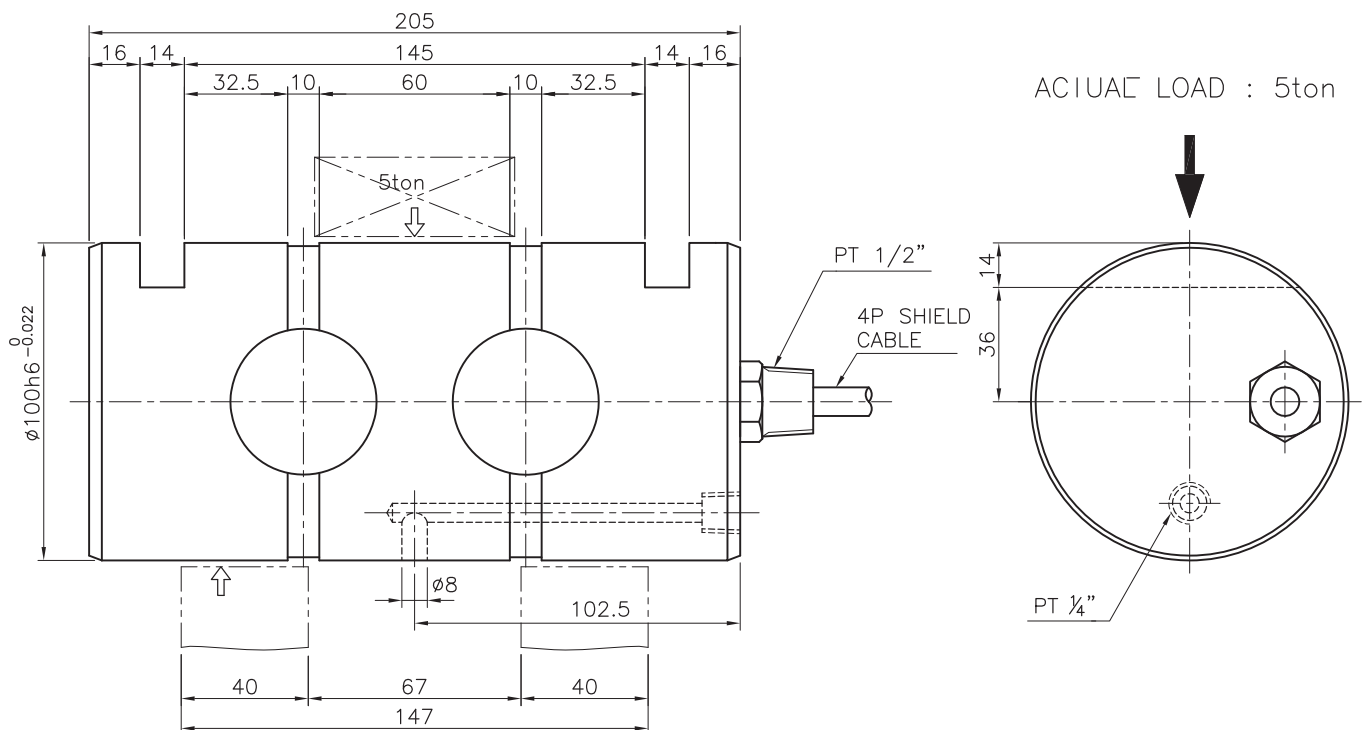
Model CSDK161 Series

Pin type load cell (10t)

SPECIFICATIONS



MODEL	CSDK161
Rated capacity (R.C.)	10ton
Rated output(R.O.)	1.0mV/V (Approx.)
Non-linearity	≤1.0% R.O.
Hysteresis	≤1.0% R.O.
Non-repeatability	≤0.5% R.O.
Creep error	≤0.1% in 20min.
Zero balance	≤1% R.O.
Compensated temperature range	-10 ~ 70°C
Operating temperature range	-20 ~ 80°C
Temp. effect on rated output	≤0.05% LOAD/10°C
Temp. effect on zero balance	≤0.05% R.O./10°C
Terminal input resistance	820 Ohms ± 20 Ohms
Terminal output resistance	700 Ohms ± 10 Ohms
Insulation resistance (Min.)	2000 MOhms at 50V DC
Excitation voltage	3~12V(Recommended), 15V(Max.)
Electrial connection	∅7mmx10m(22AWG x 4Core Shielded)
Protection class	meets IP 67
Safe overload	150% R.C
Ultimate overload	300% R.C



* Specifications are subject to change without notice

SEP, 2019