

Weigh Module

Model BMD Series

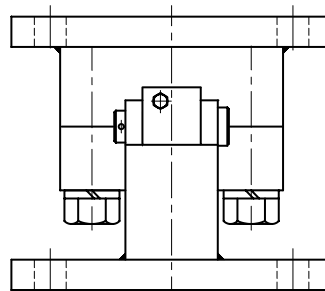
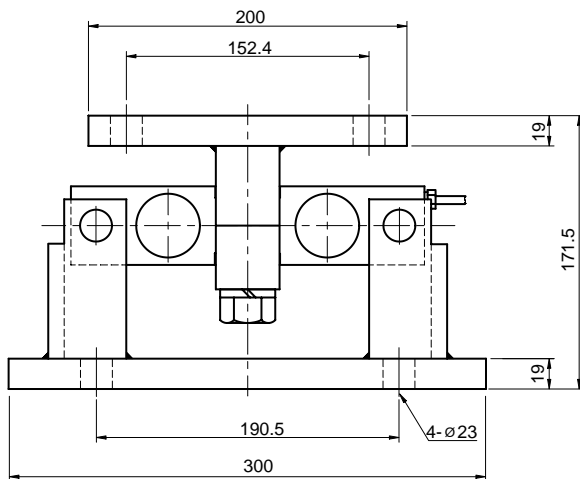
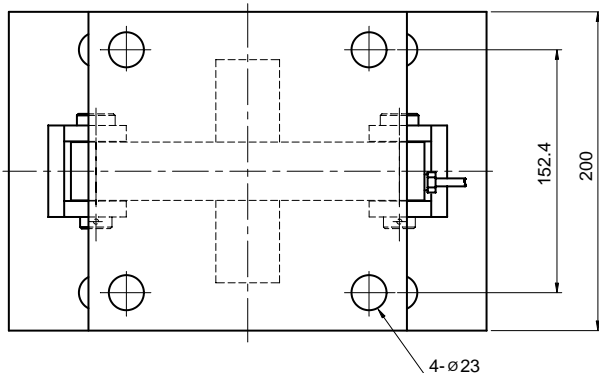
Specially Designed For
Hopper And Tank (5t~15t)

- Mounts directly to the floor or structural support.
- Self checking with provisions for thermal expansion and contraction.
- Fully welded stainless steel loadcell or fully sealed nickel plated load cells.
- Stainless steel or painted steel mounting kit.



SPECIFICATIONS

MODEL	BMD11	BMD21, BMD22
Rated capacity (R.C.)	5, 10, 15t	
Rated output(R.O.)	3mV/V ± 0.25%	2mV/V ± 0.25%
Non-linearity	≤ 0.03% R.O.	
Hysteresis	≤ 0.03% R.O.	
Non-repeatability	≤ 0.03% R.O.	
Creep error	≤ 0.03% in 20min.	
Zero balance	≤ 1% R.O.	
Compensated temperature range	-10 ~ 70°C	
Operating temperature range	-20 ~ 80°C	
Temp. effect on rated output	≤ 0.02% LOAD/10°C	
Temp. effect on zero balance	≤ 0.03% R.O./10°C	
Terminal input resistance	700 Ohms ±10 Ohms	
Terminal output resistance	700 Ohms ±7 Ohms	
Insulation resistance (Min.)	2000 MOhms at 50V DC	
Excitation voltage	10V(Recommended) /15V(Maximum)	
Electrical connection	ø7mmx6m(22AWG x 4Core Shielded)	
Protection class	meets IP 67	
Safe overload	150% R.C	
Ultimate overload	300% R.C	



ORDERING INFORMATION

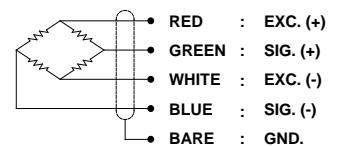
BMD11 - 5T
CAPACITY
5, 10, 15t

BMD11: CDBH Load Cell + Zinc Plated Steel Mtg Kit

BMD21: CDW Stainless Steel Load Cell + Zinc Plated Steel Mtg Kit

BMD22: CDW Stainless Steel Load Cell + Stainless Steel Mtg Kit

WIRING INFORMATION



* Specifications are subject to change without notice

DEC. 2005