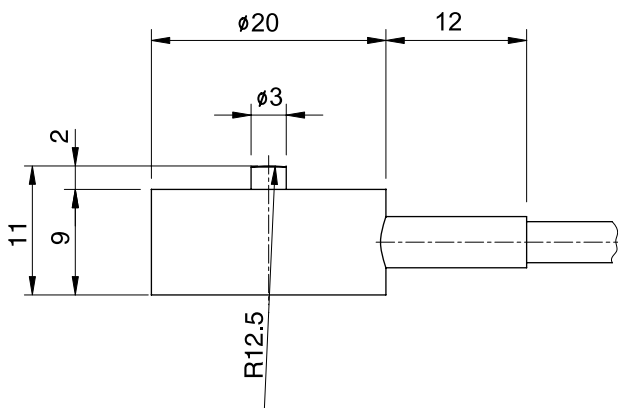
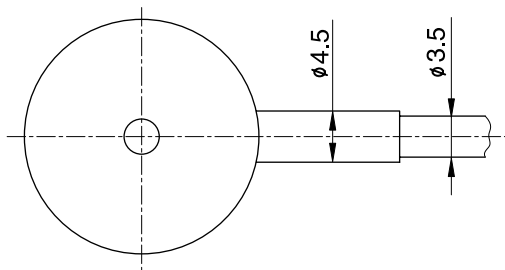


Model CBFS Series

Compression

Miniature Load Cell(3~100kg)



The model CBFS miniature type is designed for low profile compression service.

Its capacities range from 1Kg to 100kg and it comes complete with 1.5m of load cell cable.

- low profile.
- Rated output(1mV/V).
- Protection class IP65.

SPECIFICATIONS

MODEL	CBFS
Rated capacity (R.C.)	3, 5, 10, 30, 50, 100kg
Rated output(R.O.)	1.0mV/V \pm 1%
Non-linearity	\leq 1% R.O.
Hysteresis	\leq 1% R.O.
Non-repeatability	\leq 1% R.O.
Creep error	\leq 0.5% in 20min.
Zero balance	\leq 1% R.O.
Compensated temperature range	-10 ~ 70°C
Operating temperature range	-20 ~ 80°C
Temp. effect on rated output	\leq 0.1% LOAD/10°C
Temp. effect on zero balance	\leq 0.1% R.O./10°C
Terminal input resistance	350 Ohms \pm 3.5 Ohms
Terminal output resistance	350 Ohms \pm 5 Ohms
Insulation resistance (Min.)	2000 MOhms at 50V DC
Excitation voltage	10V(Recommended), 15V(Max.)
Electrical connection	\varnothing 3.5mmx1.5m(22AWG x 4Core Shielded)
Protection class	meets IP 65
Safe overload	150% R.C
Ultimate overload	300% R.C

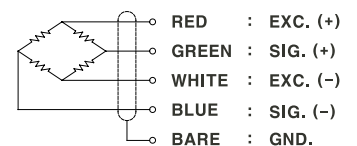
Capacity	Material
3~10kg	Aluminum (AL2024)
30~100kg	Stainless Steel (17-4PH)

ORDERING INFORMATION

CBFS - 10

MODEL	CAPACITY
CBFS	3, 5, 10, 30, 50, 100kg

WIRING INFORMATION



* Specifications are subject to change without notice

DEC, 2005