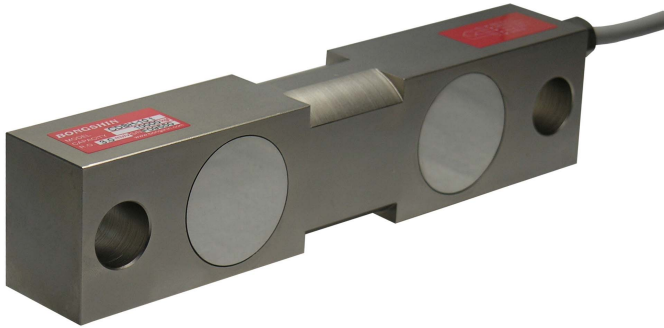


Model CDBH Series

Double Ended
Shear Beam Load Cell (5t~ 25t)

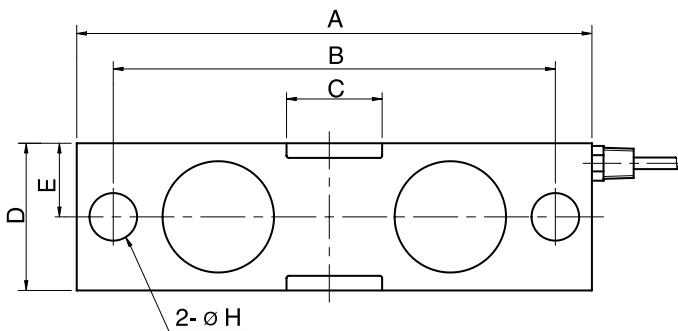
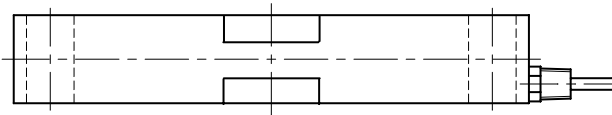
The CDBH series double ended shear beam load cell is designed for high accuracy hopper, tank scales and a variety of process weighing applications.

- Alloy tool steel construction for high accuracy
- Electroless nickel plated for corrosion resistance
- Fully sealed to IP67



SPECIFICATIONS

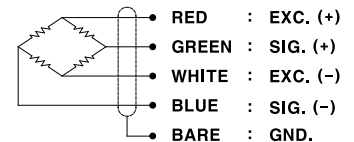
MODEL	CDBH
Rated capacity (R.C.)	5, 10, 15, 25 t 10, 20, 25, 35, 50 klbs
Rated output(R.O.)	3mV/V – 0.25%
Non-linearity	≤0.03% R.O.
Hysteresis	≤0.03% R.O.
Non-repeatability	≤0.03% R.O.
Creep error	≤0.03% in 20min.
Zero balance	≤1% R.O.
Compensated temperature range	-10 ~ 70°C
Operating temperature range	-20 ~ 80°C
Temp. effect on rated output	≤0.02% LOAD/10°C
Temp. effect on zero balance	≤0.03% R.O./10°C
Terminal input resistance	700 Ohms – 10 Ohms
Terminal output resistance	700 Ohms – 7 Ohms
Insulation resistance (Min.)	2000 MOhms at 50V DC
Excitation voltage	10V(Recommended), 15V(Max.)
Electrical connection(22AWG x 4C)	7mmx6m(Standard), 10m(Option)
Protection class	meets IP 67
Safe overload	150% R.C
Ultimate overload	300% R.C



ORDERING INFORMATION

CDBH - 10T
 MODEL CDBH CAPACITY 5, 10, 15, 25 t
 10, 20, 25, 35, 50 klbs

WIRING INFORMATION



Dimension-mm(inch)

Rated Capacity	A	B	C	D	E	F	G	H
5,10t (49.03, 98.07kN)	222	190.5	41.2	49.3	24.7	36.6	50.6	20.5
15t (147.1kN)	222	190.5	41.2	63.5	31.8	38	63.5	20.5
25t (245.2kN)	343	292.1	82.6	74.6	37.3	62	76	33
10k~25k lbs (44.48~111.2kN)	(8.75)	(7.50)	(1.62)	(1.94)	(0.97)	(1.44)	(1.99)	(0.81)
35k lbs (155.7kN)	(8.75)	(7.50)	(1.62)	(1.94)	(2.50)	(1.50)	(2.50)	(0.81)
50k lbs (222.4kN)	(13.50)	(11.50)	(3.25)	(2.94)	(1.47)	(2.44)	(2.99)	(1.31)

* Specifications are subject to change without notice

DEC, 2005