

Model DBW Series

S- Beam Load Cell (500kg ~ 5t)

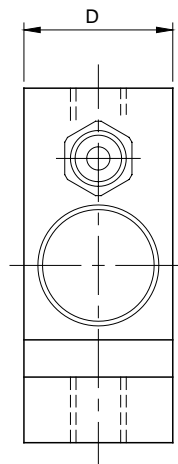
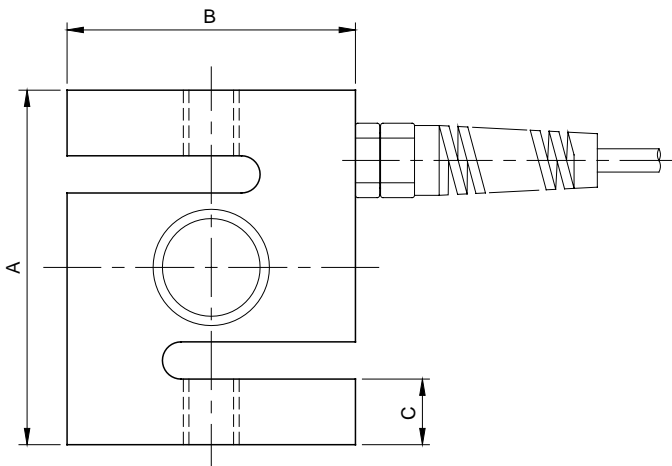
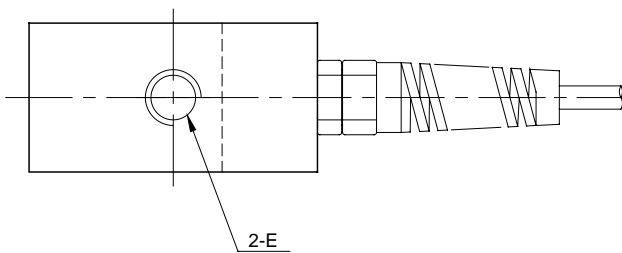


The DBW S-beam load cell is designed for industrial scale conversion and a variety of process applications.

- 17-4PH stainless steel construction for high accuracy and corrosion resistance.
- Fully welded seal with stainless steel cover for hostile environment applications.

SPECIFICATIONS

MODEL	DBW
Rated capacity (R.C.)	500kg, 1, 2, 5t
Rated output(R.O.)	2mV/V ± 0.5%
Non-linearity	≤0.05% R.O.
Hysteresis	≤0.05% R.O.
Non-repeatability	≤0.03% R.O.
Creep error	≤0.05% in 20min.
Zero balance	≤1% R.O.
Compensated temperature range	-10 ~ 70°C
Operating temperature range	-20 ~ 80°C
Temp. effect on rated output	≤0.03% LOAD/10°C
Temp. effect on zero balance	≤0.03% R.O./10°C
Terminal input resistance	350 Ohms ± 3.5 Ohms
Terminal output resistance	350 Ohms ± 5 Ohms
Insulation resistance (Min.)	2000 MOhms at 50V DC
Excitation voltage	10V(Recommended), 15V(Max.)
Electrical connection	∅7mmx3m(22AWG x 4Core Shielded)
Protection class	meets IP 67
Safe overload	150% R.C
Ultimate overload	300% R.C

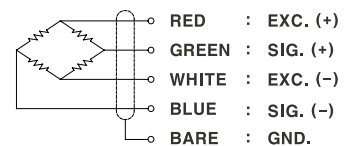


ORDERING INFORMATION

DBW - 2T

MODEL DBW CAPACITY 500kg, 1, 2, 5ton

WIRING INFORMATION



Dimension-mm

Rated Capacity	A	B	C	D	E	Rod End Ball Joint	Weight(kg)
500kg~1t (4.903 ~9.807kN)	76.2	62	15.6	32	M12x1.75P	SRDB-2	0.73
2t (19.61kN)	108.0	78	19	32	M20x1.5P	SRDB-3	1.70
5t (49.03kN)	120.7	88	22.4	38	M24x2P	SRDB-4	2.10

* Specifications are subject to change without notice

DEC, 2005