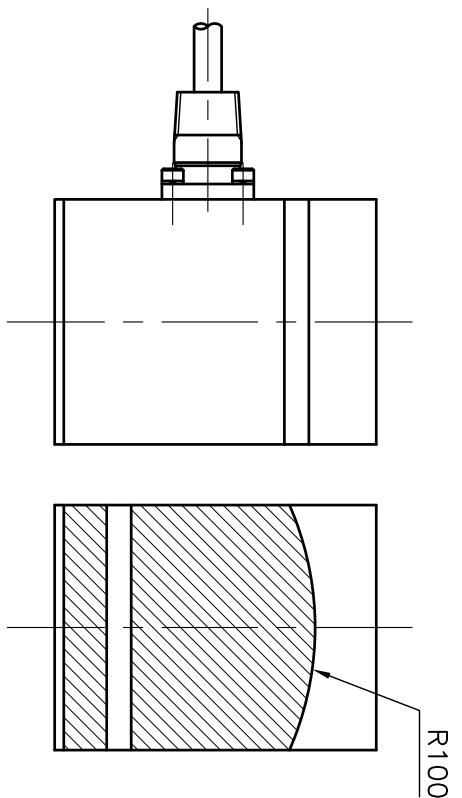
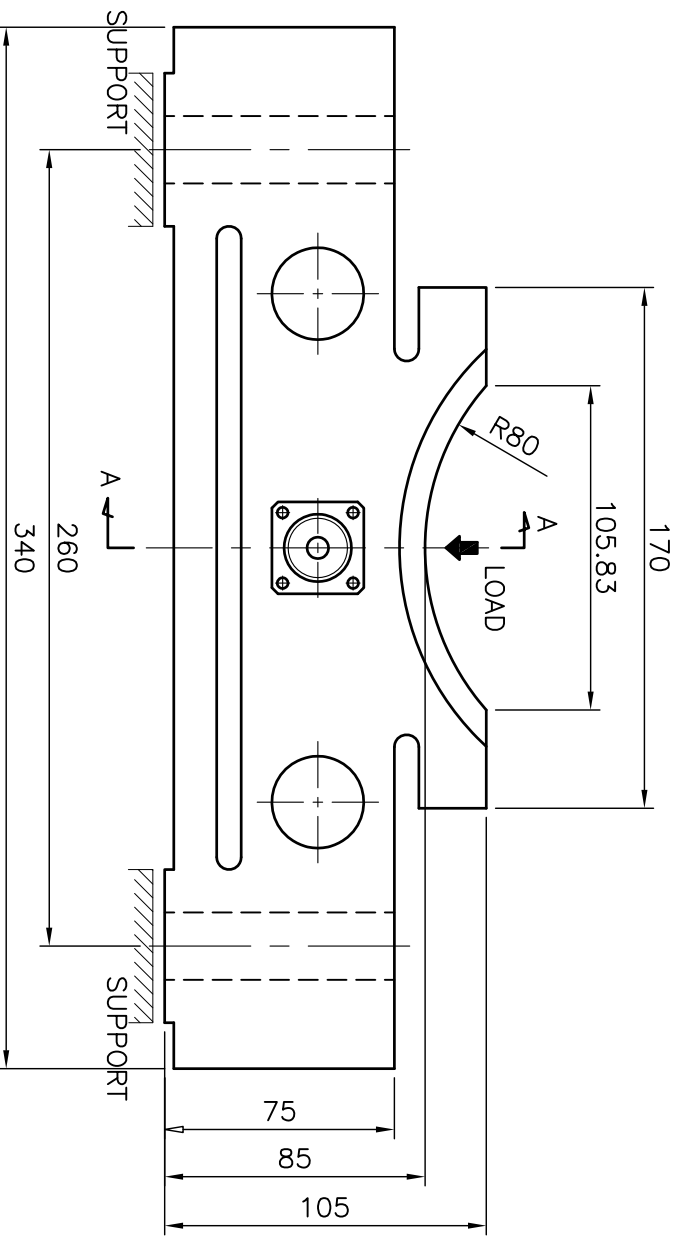


SPECIFICATIONS	
Model	BCD26 - 15T, 20T
Rated Capacity (R.C.)	15, 20ton
Rated Output (R.O.)	2.0mV/V (Nominal)
Non-Linearity	≤ 0.2% R.O.
Hysteresis	≤ 0.2% R.O.
Non-Repeatability	≤ 0.05% R.O.
Compensated Temp. Range	-10~70°C
Operating Temp. Range	-20~80°C
Creep	≤ 0.05% R.O./30min
Zero Balance	±5% R.O.
Material	Nickel plated alloy steel
Safe Overload	150% R.C.
Ultimate Overload	300% R.C.



NO.	REVISION & DESCRIPTION	DATE	DRAWN	APPROVED
2.				
1.				

SCALE	DRAWN	CHECKED	APPROVED	DWG. NO.	REV.
1/1	SJH	YDU		LS-BCD26-020TOL11	1
DATE	161117	161117			

BONGSHIN LOADCELL CO.,LTD.