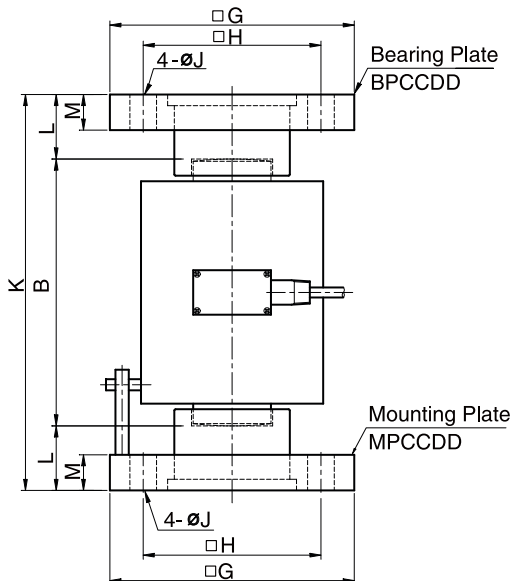
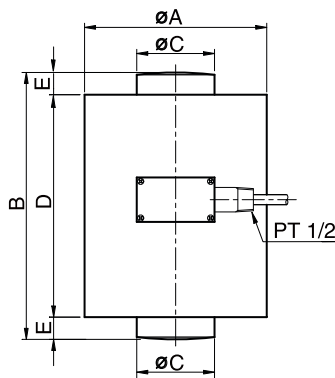


## Model CCDD Series

Compression Load Cell (100t ~ 500t)  
Canister Type



The CCDD series are designed for heavy duty weighing applications, including hoppers, tanks, silos and high capacity scales.

- Insensitive to side load
- Double convex type
- Robust high capacity design

### SPECIFICATIONS

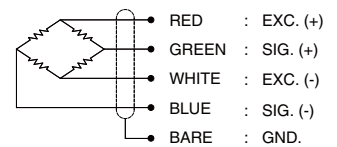
MODEL	CCDD
Rated capacity (R.C.)	100, 200, 300, 500t
Rated output(R.O.)	1.5mV/V ± 0.5%
Non-linearity	≤0.1% R.O.
Hysteresis	≤0.1% R.O.
Non-repeatability	≤0.05% R.O.
Creep error	≤0.05% in 20min.
Zero balance	≤1% R.O.
Compensated temperature range	-10 ~ 70°C
Operating temperature range	-20 ~ 80°C
Temp. effect on rated output	≤0.03% LOAD/10°C
Temp. effect on zero balance	≤0.03% R.O./10°C
Terminal input resistance	350 Ohms ± 3.5 Ohms
Terminal output resistance	350 Ohms ± 5 Ohms
Insulation resistance (Min.)	2000 MOhms at 50V DC
Excitation voltage	10V(Recommended), 15V(Max.)
Electrical connection	ø7mm x 6m(22AWG x Core Shielded)
Protection class	meets IP 67
Safe overload	150% R.C
Ultimate overload	300% R.C

### ORDERING INFORMATION

**CCDD - 200T**

MODEL CAPACITY  
CCDD 100, 200, 300, 500 ton

### WIRING INFORMATION



### Dimensions-mm

Rated Capacity	A	B	C	D	E	G	H	J	K	L	M	Bearing Plate	Mounting Plate	Weight (kg) (only L/C)
100t ( 980.7kN )	164	240	70	200	20	200	150	23	356	58	32	BPCCDD1	MPCCDD1	16
200t ( 1961kN )	215	260	100	210	25	260	200	27	396	68	42	BPCCDD2	MPCCDD2	29
300t ( 2942kN )	215	340	120	290	25	280	200	35	492	76	52	BPCCDD3	MPCCDD3	46
500t ( 4903kN )	265	390	155	330	30	380	280	40	568	89	65	BPCCDD4	MPCCDD4	106

\* Specifications are subject to change without notice

JUL, 2016