

Model DS202 Series

Compression
Low profile load cell (10t, 20t)

The model DS202 is a low profile compression shear type load cell suited to precision applications where headroom and side loads are a problem. All units are machined from a solid billet of tool steel and sealed with welded diaphragms.

- Hermetically sealed
- High rated output(3mV/V)
- Insensitive to side load

SPECIFICATIONS

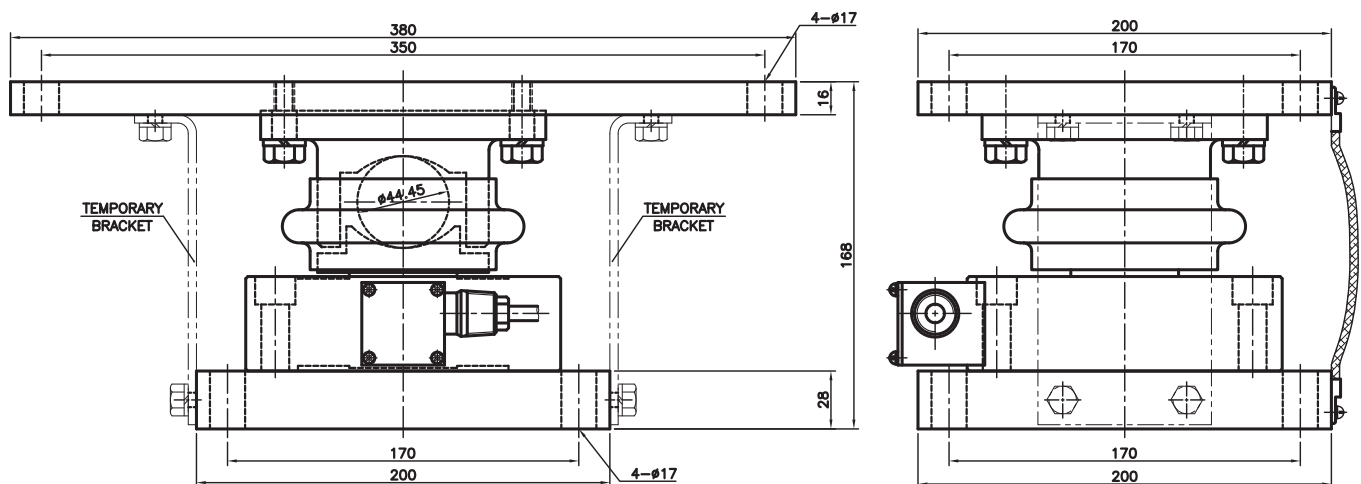
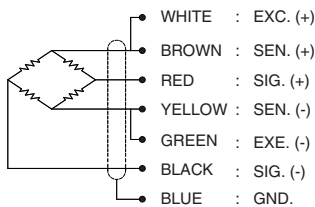
MODEL	DS202
Rated capacity (R.C.)	10, 20ton
Rated output(R.O.)	3.0mV/V ± 0.3%
Non-linearity	≤0.05% R.O.
Hysteresis	≤0.05% R.O.
Non-repeatability	≤0.02% R.O.
Creep error	≤0.03% in 20min.
Zero balance	≤1% R.O.
Compensated temperature range	-10 ~ 70°C
Operating temperature range	-20 ~ 80°C
Temp. effect on rated output	≤0.03% LOAD/10°C
Temp. effect on zero balance	≤0.03% R.O./10°C
Terminal input resistance	350 Ohms ± 10 Ohms
Terminal output resistance	350 Ohms ± 5 Ohms
Insulation resistance (Min.)	5000 MOhms at 50V DC
Excitation voltage	3~12V(Recommended), 15V(Max.)
Electrial connection	Ø7mmx10m(0.25mm ² x 6C)
Protection class	meets IP 67
Safe overload	150% R.C
Material	Load cell Mounting kit
	Stainless steel(17-4PH) Zinc plate & Mild steel

ORDERING INFORMATION

DS202 - 10T

MODEL CAPACITY
DS202 10, 20 ton

WIRING INFORMATION



* Specifications are subject to change without notice

DEC, 2012