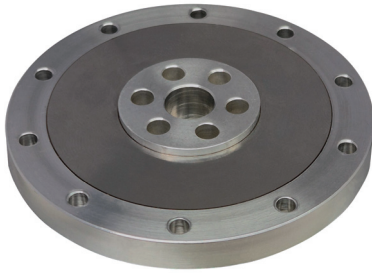


Model B2TA Series

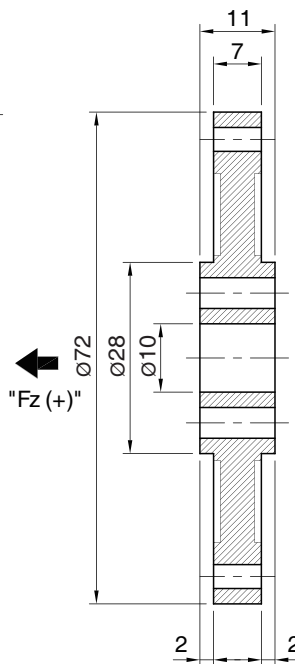
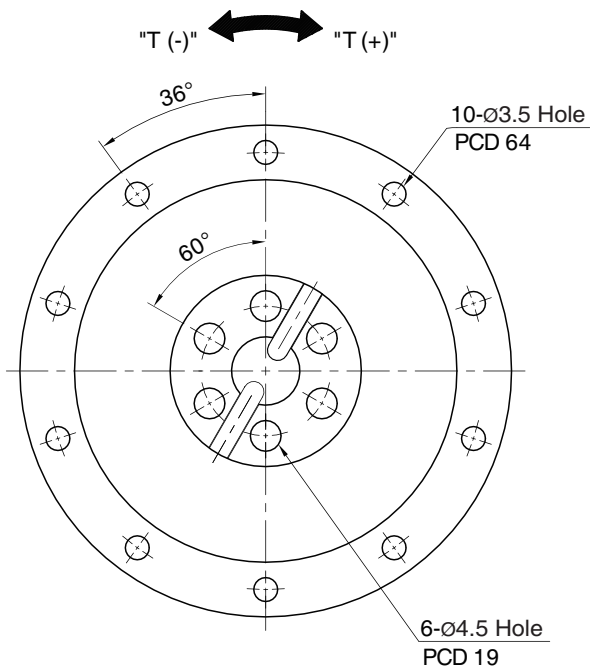
Joint Torque Sensor

- Two-direction force structure
- One direction force and torque structure
- Aluminum alloy element



SPECIFICATIONS

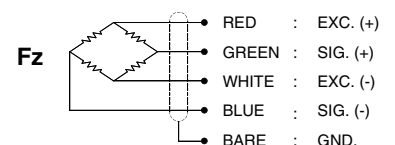
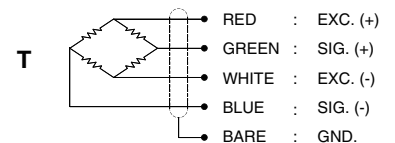
MODEL	B2TA	
	T	Fz
Axis	T	Fz
Rated capacity (R.C.)	20N-m	1kN
Rated output(R.O.), Nominal	0.5mV/V	0.8mV/V
Non-linearity	≤1.0% R.O.	
Hysteresis	≤1.0% R.O.	
Non-repeatability	≤0.5% R.O.	
Cross Talk	≤5% R.O.	
Zero balance	≤1% R.O.	
Compensated temperature range	-10 ~ 70°C	
Operating temperature range	-20 ~ 80°C	
Temp. effect on rated output	≤0.1% LOAD/10°C	
Temp. effect on zero balance	≤0.05% R.O./10°C	
Terminal input resistance	840 Ohms ± 50 Ohms	
Terminal output resistance	700 Ohms ± 5 Ohms	
Insulation resistance (Min.)	2000 MOhms at 50V DC	
Excitation voltage	3~12V(Recommended), 15V(Max.)	
Electrical connection	∅3 x 1.5m (4Core, Shielded)	
Safe overload	150% R.C	
Ultimate overload	300% R.C	



ORDERING INFORMATION

B2TA - 50
 MODEL B2T1 CAPACITY 20 N-m / 1kN

WIRING INFORMATION



* Specifications are subject to change without notice

DEC, 2025