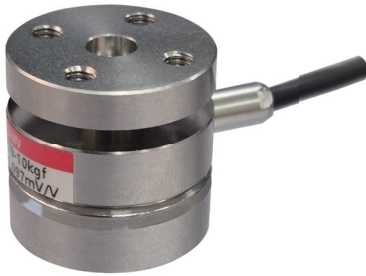


Model M1TA Series

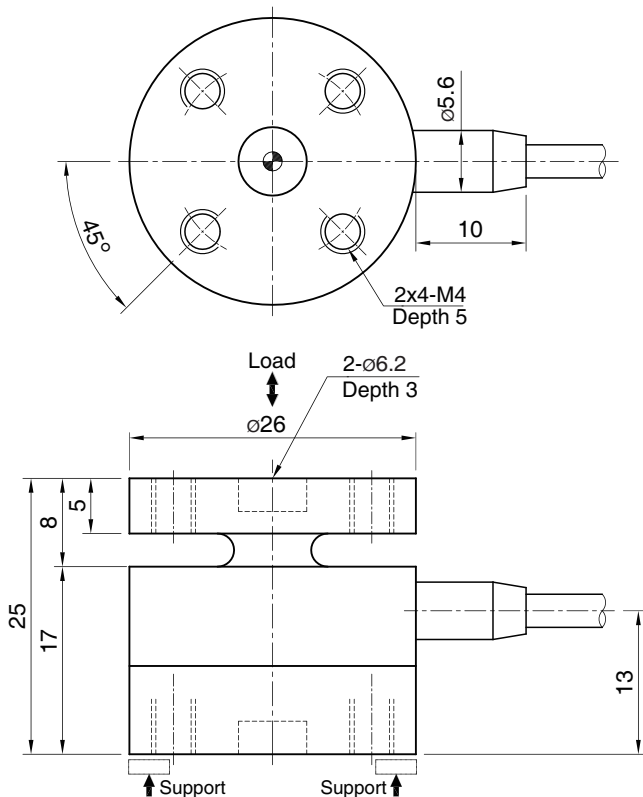
Tension & Compression
(10~50kg)

- One-direction force structure
- Stainless steel element



SPECIFICATIONS

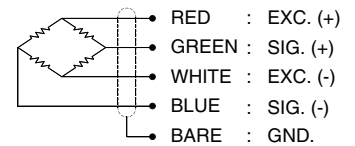
MODEL	M1TA
Rated capacity (R.C.)	10, 20, 50kg
Rated output(R.O. Nominal)	1.0mV/V
Non-linearity	≤0.5% R.O.
Hysteresis	≤0.5% R.O.
Non-repeatability	≤0.2% R.O.
Zero balance	≤1% R.O.
Compensated temperature range	-10 ~ 70°C
Operating temperature range	-20 ~ 80°C
Temp. effect on rated output	≤0.1% LOAD/10°C
Temp. effect on zero balance	≤0.1% R.O./10°C
Terminal input resistance	420 Ohms ± 50 Ohms
Terminal output resistance	350 Ohms ± 5 Ohms
Insulation resistance (Min.)	2000 MOhms at 50V DC
Excitation voltage	3~12V(Recommended), 15V(Max.)
Electrical connection	3~12V DC (15V Max.)
Safe overload	150% R.C
Ultimate overload	300% R.C
Material	17-4PH Stainless steel



ORDERING INFORMATION

M1TA - 20
 MODEL M1TA CAPACITY 10, 20, 50kg

WIRING INFORMATION



* Specifications are subject to change without notice

DEC, 2025

BONGSHIN LOADCELL CO., LTD.

55, Seobuk-ro, Gajang Ind. Complex, Osan-si, Korea / 18103
 TEL : 82-31-742-6661 www.bongshin.com
 FAX : 82-31-742-6664 E-mail : loadcell@bongshin.com